

OFFICE FOR LEASE

# Pacific Parkway Center

12909 SW 68<sup>th</sup> Pkwy, Suite 460, Portland, OR 97223



## Key Features



3,512 sq. ft. office

Building conference room

Upgraded common areas

Immediate access to Interstates 5 and 217

4/1,000 parking ratio

Nearby amenities and services

Lease Rate:

\$36.00/sq. ft./yr.  
full service

Jake Bigby

jakeb@pacitrust.com

Caitlin Knecht

caitlink@pacitrust.com

503.624.6300

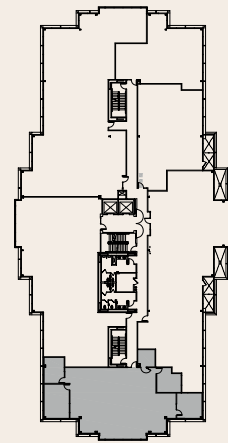
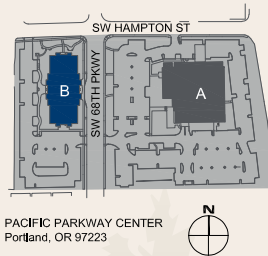
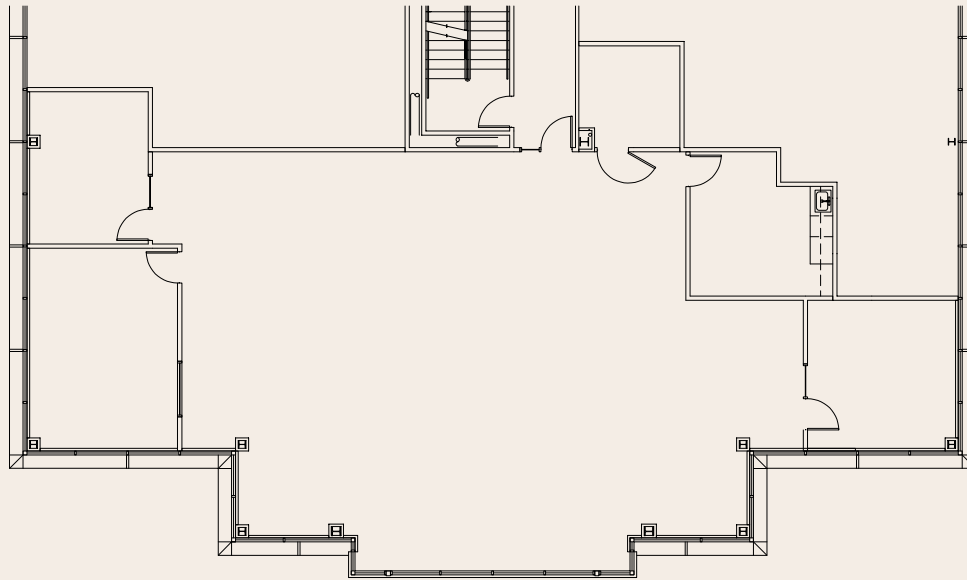
Owned & Managed by

**PACTRUST**

# Space Plan

12909 SW 68<sup>th</sup> Pkwy, Suite 460, Portland, OR 97223

3,512 Sq. Ft.



**FOURTH FLOOR  
BUILDING PLAN**

**Jake Bigby**  
jakeb@pactrust.com

**Caitlin Knecht**  
caitlink@pactrust.com

503.624.6300  
www.PacTrust.com